



## 35 Ypres Road, Allestree, Derby, DE22 2NA

**No Onward Chain**  
**£269,950**



Enjoying an end of cul-de-sac position in this mature Allestree location is this two bedroom/two bathroom semi detached property with exceptionally long rear garden. No Chain and Vacant Possession.





# 35 Ypres Road, Allestree, Derby, DE22 2NA

**No Onward Chain £269,950**



The gas centrally heated and UPVC double glazed accommodation briefly comprises entrance hallway with stairs leading to the first floor, bay window lounge, modern fitted kitchen diner leading into a rear conservatory.

To the first floor a landing gives access into two well proportioned bedrooms both having fitted wardrobes, bathroom and separate shower room both with WC.

Externally, the property occupies an exceptionally long garden plot having off-road parking to the front, gated side access leading to the long rear garden mainly laid to lawn with established plants and two store sheds.

Allestree is a much favoured residential location having an excellent range of local amenities and facilities including grocery stores, schools and university, post office, popular public houses, restaurants and cafés. The city centre is just a short distance away as is the National Trust Kedleston Hall estate.

## ACCOMMODATION

### GROUND FLOOR

#### ENTRANCE HALLWAY

Entering the property through a UPVC double glazed front door into a hallway area with stairs leading to the first floor, UPVC double glazed window, radiator and access into:

#### LOUNGE

13'7" into bay x 13' (4.14m into bay x 3.96m)

A spacious reception room having a square UPVC double glazed bay window with inset radiator, fireplace surround and hearth with inset gas fire, media connections, radiator.

#### DINING KITCHEN

14'10" x 8' (4.52m x 2.44m)

Appointed with a modern range of fitted wall and base units with matching cupboard and drawer fronts, laminate work surfaces and matching splashback, inset electric oven and hob, stainless steel sink and drainer, integrated fridge and freezer set within a matching breakfast bar, vinyl floor covering, UPVC double glazed window and door giving access to the rear garden, chimney breast recess with shelving, radiator, UPVC double glazed sliding door giving access into:

#### CONSERVATORY

11'4" x 9'2" (3.45m x 2.79m)

Constructed of UPVC double glazed windows and panels, French doors and a pitched ceiling, fitted vertical blinds, vinyl floor covering.

### FIRST FLOOR

#### LANDING

Side UPVC double glazed window, access to loft.

## BEDROOM ONE

10'10" x 10'7" to rear of fitted wardrobes  
(3.30m x 3.23m to rear of fitted wardrobes)  
A generous double bedroom having a full width fitted wardrobes with sliding doors providing a range of hanging and shelving storage, front facing UPVC double glazed window, radiator.

## BEDROOM TWO

10'6" x 8'1" (3.20m x 2.46m)  
A generous second bedroom with fitted wardrobes, cabinets and shelving, rear facing UPVC double glazed window enjoying a fine aspect down the long rear garden, radiator.

## BATHROOM

5'10" x 5'2" (1.78m x 1.57m)  
Appointed with a white three-piece suite comprising a panelled bath with an electric shower over, a wash hand basin and WC are neatly fitted into a vanity unit, tiled floor and walls, UPVC double glazed window, radiator.

## SHOWER ROOM

7'6" x 5'10" (2.29m x 1.78m)  
Appointed with a corner shower cubicle with double opening sliding doors, electric shower, wash hand basin sat on vanity unit and low level WC, tiled floor and walls to splash areas, UPVC double glazed window to the front elevation, radiator and a built-in store cupboard.

## OUTSIDE

Externally, the property occupies an exceptionally long garden plot having off-road parking to the front, gated side access leading to the long rear garden mainly laid to lawn with established plants and two store sheds.





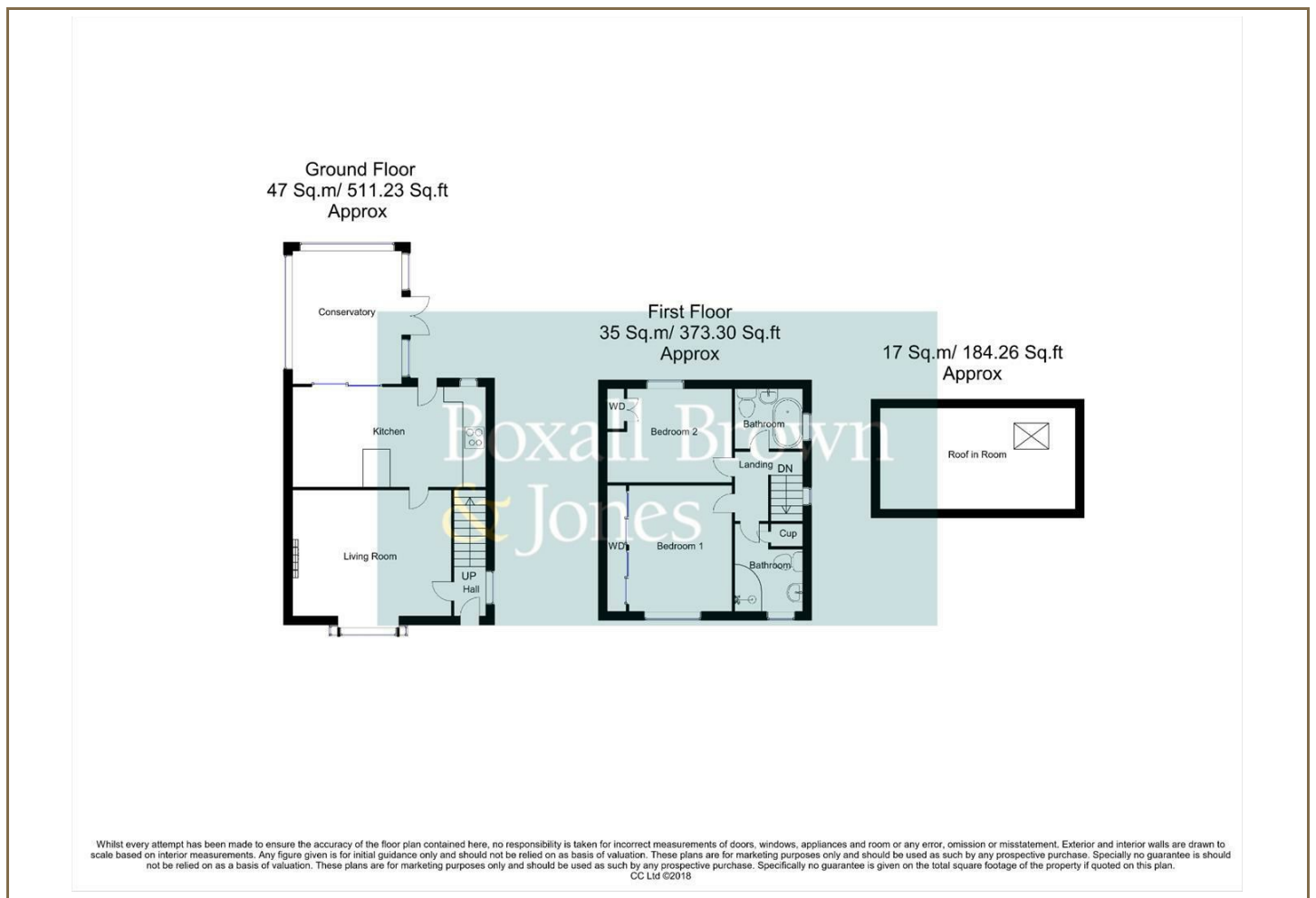




## Road Map



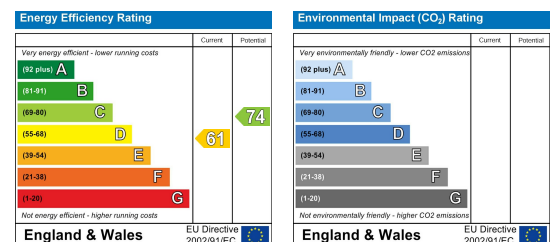
## Floor Plan



## Viewing

Please contact our Derby Office on 01332 383838 if you wish to arrange a viewing appointment for this property or require further information.

## Energy Efficiency Graph



These particulars, whilst believed to be accurate are set out as a general outline only for guidance and do not constitute any part of an offer or contract. Intending purchasers should not rely on them as statements of representation of fact, but must satisfy themselves by inspection or otherwise as to their accuracy. No person in this firm's employment has the authority to make or give any representation or warranty in respect of the property. Boxall Brown & Jones believe is being wholly transparent about referral fees received from contractors and service providers. A comprehensive list of referral fees paid to Boxall Brown & Jones can be found at [www.boxallbrownandjones.co.uk](http://www.boxallbrownandjones.co.uk)

[boxallbrownandjones.co.uk](http://boxallbrownandjones.co.uk)

Oxford House, Stanier Way  
Wyvern Business Park, Derby, DE21 6BF  
01332 383838  
sales@boxallbrownandjones.co.uk

The Studio, Queen Street  
Belper DE56 1NR  
01773 880788  
belper@boxallbrownandjones.co.uk